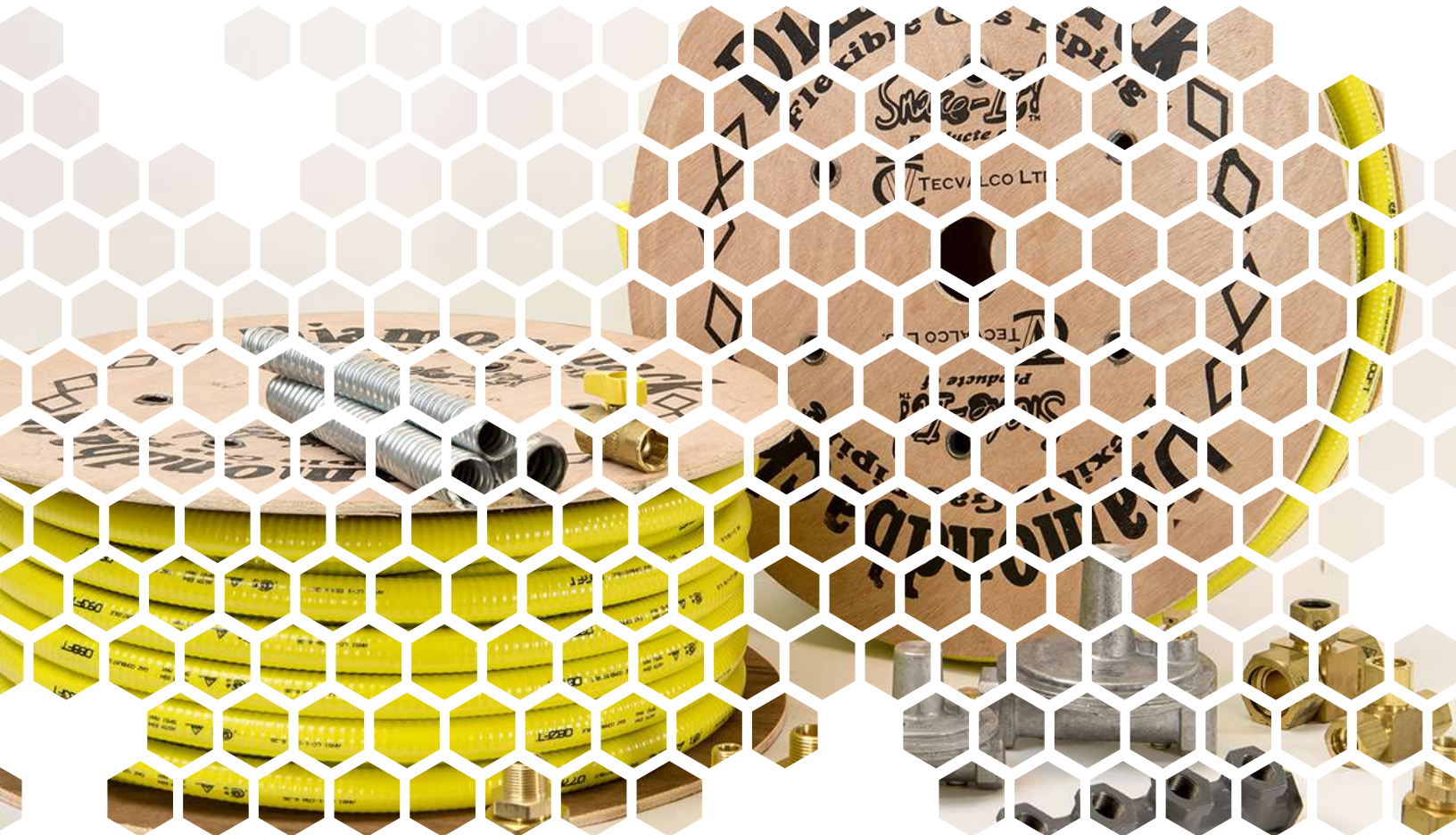




Diamondback

FLEXIBLE GAS PIPING

TUBING | FITTINGS | ACCESSORIES | TOOLS





DIAMONDBACK FLEXIBLE TUBING (CSST)

Catalog #	Tubing Size		EHD*	OD	ID	Spool Size
	in.	mm				
375DFT	3/8"	(10)	15	.585	.464	250'
500DFT	1/2"	(15)	19	.748	.610	250'
500DFTS	1/2"	(15)	19	.748	.610	100'
750DFT	3/4"	(20)	25	1.023	.844	250'
750DFTS	3/4"	(20)	25	1.023	.844	100'
1000DFT	1"	(25)	31	1.307	1.092	150'
1250DFT	1 1/4"	(32)	37	1.597	1.322	125'

*EHD (effective Hydraulic Diameter) is a relative measure of flow capacity.

Use: Conveyance of natural gas or propane gas (LP).



DIAMONDBACK STRAIGHT MECHANICAL FITTINGS

Catalog #	Fits Tubing Size		NPT Thread Size	
	in.	mm	in.	mm
375DMF	3/8"	(10)	1/2"	(15)
500DMF	1/2"	(15)	1/2"	(15)
750DMF	3/4"	(20)	3/4"	(20)
1000DMF	1"	(25)	1"	(25)
1250DMF	1 1/4"	(32)	1 1/4"	(32)

Use: Connects CSST flexible gas piping to a manifold, immovable gas appliance, or gas outlet.



DIAMONDBACK STRAIGHT MECHANICAL COUPLINGS

Catalog #	Fits Tubing Size	
	in.	mm
375DC	3/8"	(10)
500DC	1/2"	(15)
750DC	3/4"	(20)
1000DC	1"	(25)

Use: Mechanical coupling to connect tubes of the same size.



DIAMONDBACK BRASS TEE FITTINGS

Catalog #	Description
DT555	1/2" x 1/2" x 1/2" Brass Tee Fitting
DT7555	3/4" x 1/2" x 1/2" Brass Tee Fitting
DT75575	3/4" x 1/2" x 3/4" Brass Tee Fitting
DT151	1" x 1/2" x 1" Brass Tee Fitting
DT17575	1" x 3/4" 3/4" Brass Tee Fitting
DT1751	1" x 3/4" x 1" Brass Tee Fitting

Use: To connect tubing of different sizes.



Left: Indoor termination fitting with iron flange.

Right: Outdoor termination fitting with brass flange.

TERMINATION FLANGE FITTINGS

Indoor Catalog #	Outdoor Catalog #	Fits Tubing Size		NPT Thread Size	
		in.	mm	in.	mm
375DFF	375DBFF	3/8"	(10)	1/2"	(15)
500DFF	500DBFF	1/2"	(15)	1/2"	(15)
750DFF	750DBFF	3/4"	(20)	3/4"	(20)
1000DFF	1000DBFF	1"	(25)	1"	(25)

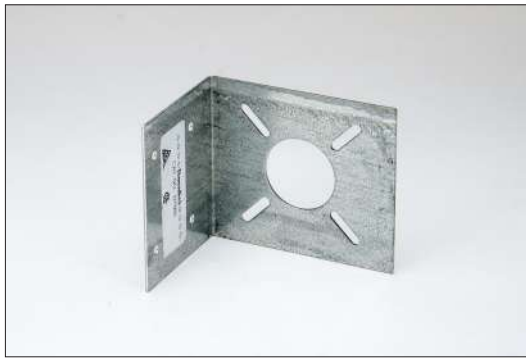
Use: Termination of gas line.



MANIFOLD BRACKET

Catalog #DMB. Fits multi-port steel manifolds or field fabricated black iron manifold.

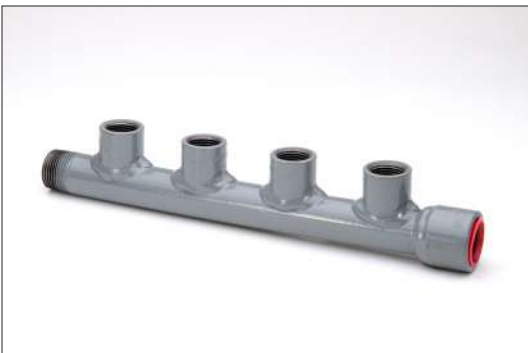
Use: Securely anchors manifold to wall.



TERMINATION MOUNTING BRACKET

Catalog #DTMB. One part fits 3/8" (10) - 1" (25).

Use: To support termination flange fitting in through-the-wall installations.



MULTI-PORT COATED STEEL MANIFOLDS

Catalog #	Inlet/Outlet		Female Outlet Ports
	in.	mm	
500DSM 3/4"	(20) female in	all four @1/2" (15)	
	1/2" (15) male out		
750DSM 1"	(25) female in	all four @3/4" (20)	
	3/4" (20) male out		

Use: Multi-port distribution enabling individual runs to multiple outlets.



STRIKER PLATES

Catalog #	Description
DSPQ	3" x 2" striker plate, quarter
DSPH	3" x 7" striker plate, half
DSPF	3" x 12" striker plate, full
DSPX	6 1/2" x 17" striker plate, XL

Use: Protection of tubing from puncture.



FLOPPY CONDUIT

Catalog #	Fits		Coil Description
	in.	mm	
375DFC	3/8"	(10)	3/4" x 50' coil
500DFC	1/2"	(15)	1" x 50' coil
750DFC	3/4"	(20)	1 1/4" x 50' coil
1000DFC	1"	(25)	1 1/2" x 25' coil
1250DFC	1 1/4"	(32)	2" x 25' coil

Catalog #	Fits		Coil Description
	in.	mm	
375DFC-1	3/8"	(10)	3/4" x 1' length
500DFC-1	1/2"	(12)	1" x 1' length
750DFC-1	3/4"	(20)	1 1/4" x 1' length
1000DFC-1	1"	(25)	1 1/2" x 1' length
1250DFC-1	1 1/4"	(32)	2" x 1' length

Use: Protection of tubing from puncture.



PRESSURE REGULATORS

Catalog #	Maxitrol Model #	Inlet Thread		Description
		in.	mm	
500DR3N	325-3L-7	1/2"	(15)	2PSI natural gas regulator
500DR3P	325-3L-11	1/2"	(15)	2PSI propane gas regulator
750DR5A	325-5AL-7	3/4"	(20)	2PSI natural gas regulator
500DR3XN	325-3L47-7	1/2"	(15)	5PSI natural gas regulator w/opd*
750DR5XA	325-5AL48-7	3/4"	(20)	5PSI natural gas regulator w/opd*

Use: Installed in elevated pressure systems to reduce pressure to standard appliance pressure.

Note: Maxitrol specifies 7" spring setting for natural gas and 11" setting for propane.

*Overpressure Protection Device.



5PSI SHUTOFF BALL VALVES

Catalog #	Size		Pressure Rating
	in.	mm	
500DBV	1/2"	(15)	5PSI
750DBV	3/4"	(20)	5PSI

Use: Installed on the elevated pressure side of the pressure regulator.

Note: Standard approved valves may be used on the low pressure side of the installation.



TUBE CUTTER

Catalog #DTC

Fits 3/8" (10) - 3/4" (20)

Use: CTU and de-burr stainless steel tubing.



REPLACEMENT FITTING SPLIT RINGS

Catalog #	Fits Tubing Size	
	in.	mm
375DSR	3/8"	(10)
500DSR	1/2"	(15)
750DSR	3/4"	(20)
1000DSR	1"	(25)

Use: Spare rings for fittings and couplings.



STRAIGHT STUB-OUT AND 90 AND 90 STUB-OUT TERMINATION FITTINGS

Catalog #	Fits Tubing Size		NPT Thread Size	
	in.	mm	in.	mm
500DTF	1/2"	(15)	1/2"	(15)
500D90TF	1/2"	(15)	1/2"	(15)
750DTF	3/4"	(20)	3/4"	(20)

Use: Termination of gas line.



Sales/Training Materials

Helpful tools to help you sell and install Diamondback Flexible Gas Piping.

- Installer Training Manual
- Trained Installer Application Card
- Advanced Trained Installer Application Card
- Certified Instructor Application Form & Credential
- Certified Instructors Manual
- Design Guide & Installation Instruction Manual
- Pocket Size Guide

